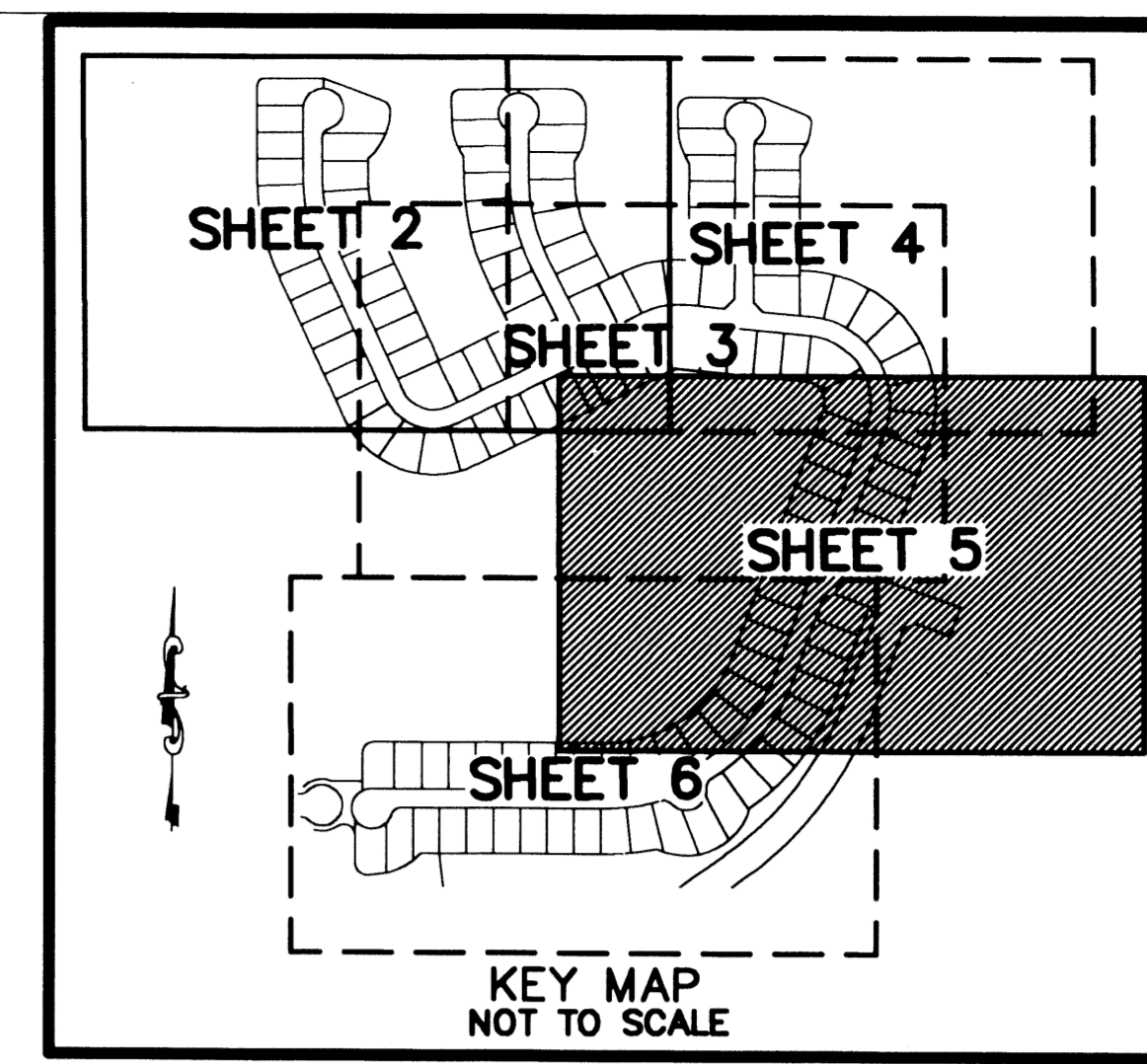


# VILLAGES OF WINDSOR TRACT F/G REPLAT

A PLANNED UNIT DEVELOPMENT BEING A PART OF VILLAGES OF WINDSOR PUD  
 BEING A REPLAT OF TRACT F, VILLAGES OF WINDSOR PLAT 5, AS RECORDED IN PLAT BOOK 100, PAGES 31 THROUGH 41,  
 OF THE PUBLIC RECORDS OF PALM BEACH COUNTY, FLORIDA, LYING IN SECTIONS 5 AND 8, TOWNSHIP 45 SOUTH, RANGE 42 EAST, PALM BEACH COUNTY, FLORIDA

THIS INSTRUMENT PREPARED BY  
 DAVID P. LINDLEY  
 OF  
**CAULFIELD and WHEELER, INC.**  
 SURVEYORS - ENGINEERS - PLANNERS  
 7301-A WEST PALMETTO PARK ROAD, SUITE 100A  
 BOCA RATON, FLORIDA 33433 - (561)392-1991  
 OCTOBER - 2002



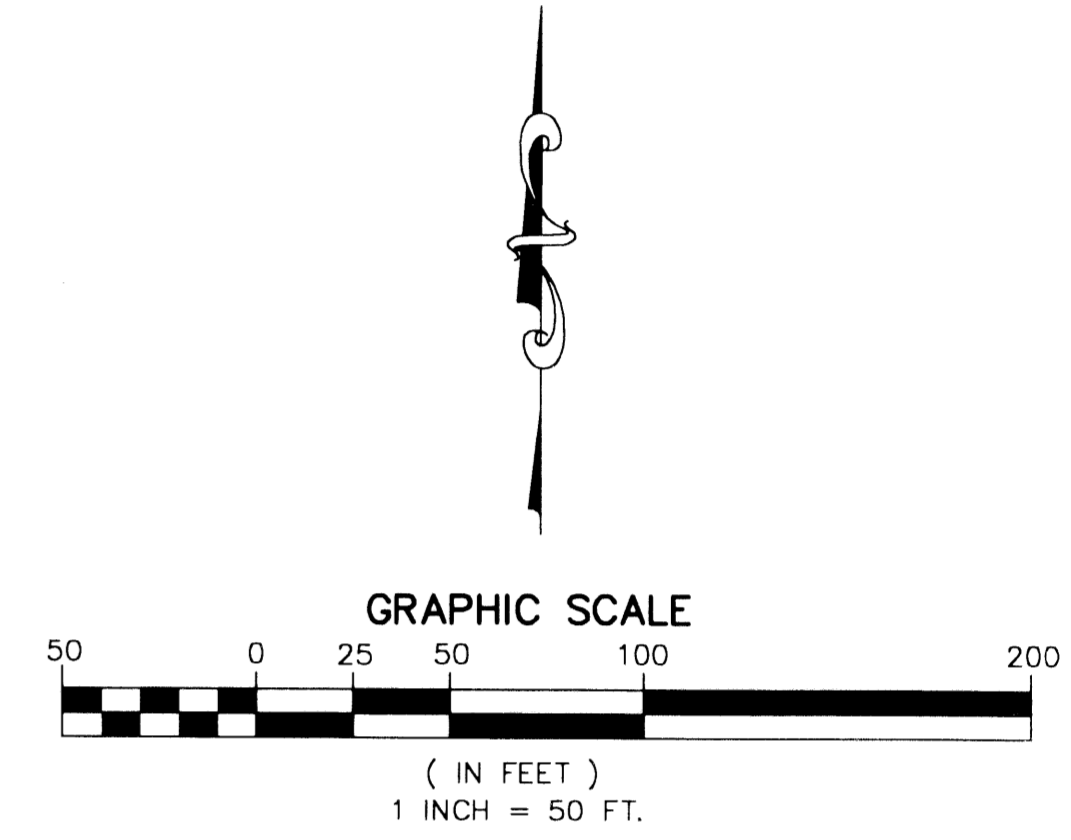
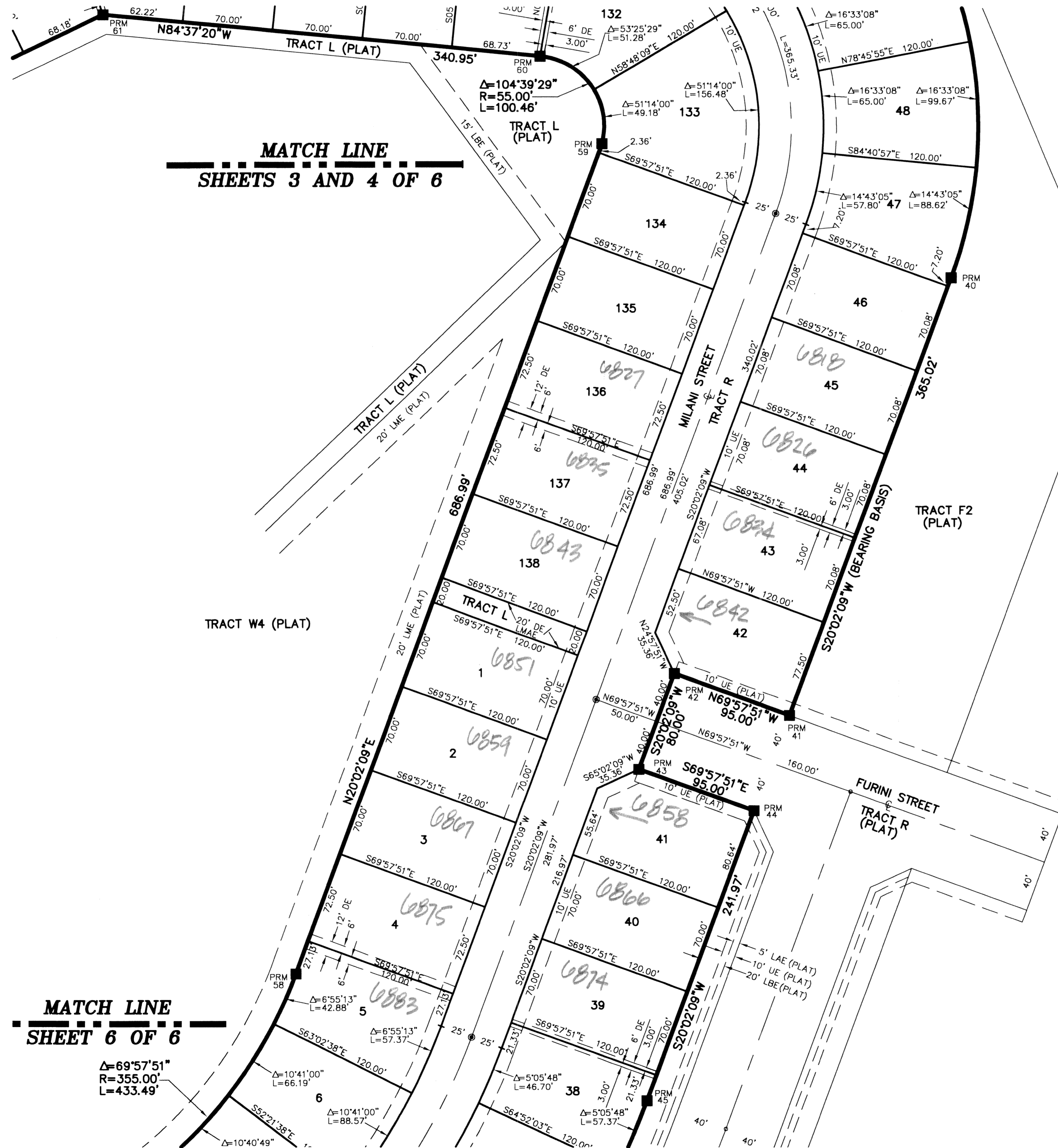
# 65

STATE OF FLORIDA  
 COUNTY OF PALM BEACH  
 THIS PLAT WAS FILED FOR  
 RECORD AT \_\_\_\_\_ M.  
 THIS \_\_\_\_\_ DAY OF \_\_\_\_\_  
 A.D. 2003 AND DULY RECORDED  
 IN PLAT BOOK \_\_\_\_\_ ON  
 PAGES \_\_\_\_\_ AND \_\_\_\_\_

DOROTHY H. WILKEN  
 CLERK CIRCUIT COURT

BY: \_\_\_\_\_  
 DEPUTY CLERK

**SHEET 5 OF 6**



**NOTES**  
**COORDINATES, BEARINGS AND DISTANCES**  
 COORDINATES SHOWN ARE GRID  
 DATUM = NAD 83 1990 ADJUSTMENT  
 ZONE = FLORIDA EAST  
 LINEAR UNIT = US SURVEY FEET  
 COORDINATE SYSTEM 1983 STATE PLANE  
 TRANSVERSE MERCATOR PROJECTION  
 ALL DISTANCES ARE GROUND  
 SCALE FACTOR = 1.0000195  
 GROUND DISTANCE X SCALE FACTOR = GRID DISTANCE  
 BEARINGS AS SHOWN HEREON ARE GRID DATUM, NAD 83 1990  
 ADJUSTMENT, FLORIDA EAST ZONE.  
 COORDINATES SHOWN ON THE CONTROL P.R.M.S MEET OR  
 EXCEED THE LOCAL ACCURACY REQUIREMENTS OF A 2  
 CENTIMETER GEODETIC CONTROL SURVEY.

S20°02'09"W (PLAT BEARING) 00°24'17" = BEARING ROTATION  
 S19°37'52"W (GRID BEARING) (PLAT TO GRID)  
 EAST LINE THIS PLAT COUNTERCLOCKWISE

SUBDIVISION VILLAGES OF WINDSOR TRACT F/G REPLAT  
 BOOK 100 PAGE 65  
 FLOOD MAP # 170 A  
 FLOOD ZONE B  
 ZONING PUD  
 QUAD # 44  
 SE  
 TAZ 1024  
 PUD NAME VILLAGES OF WINDSOR